



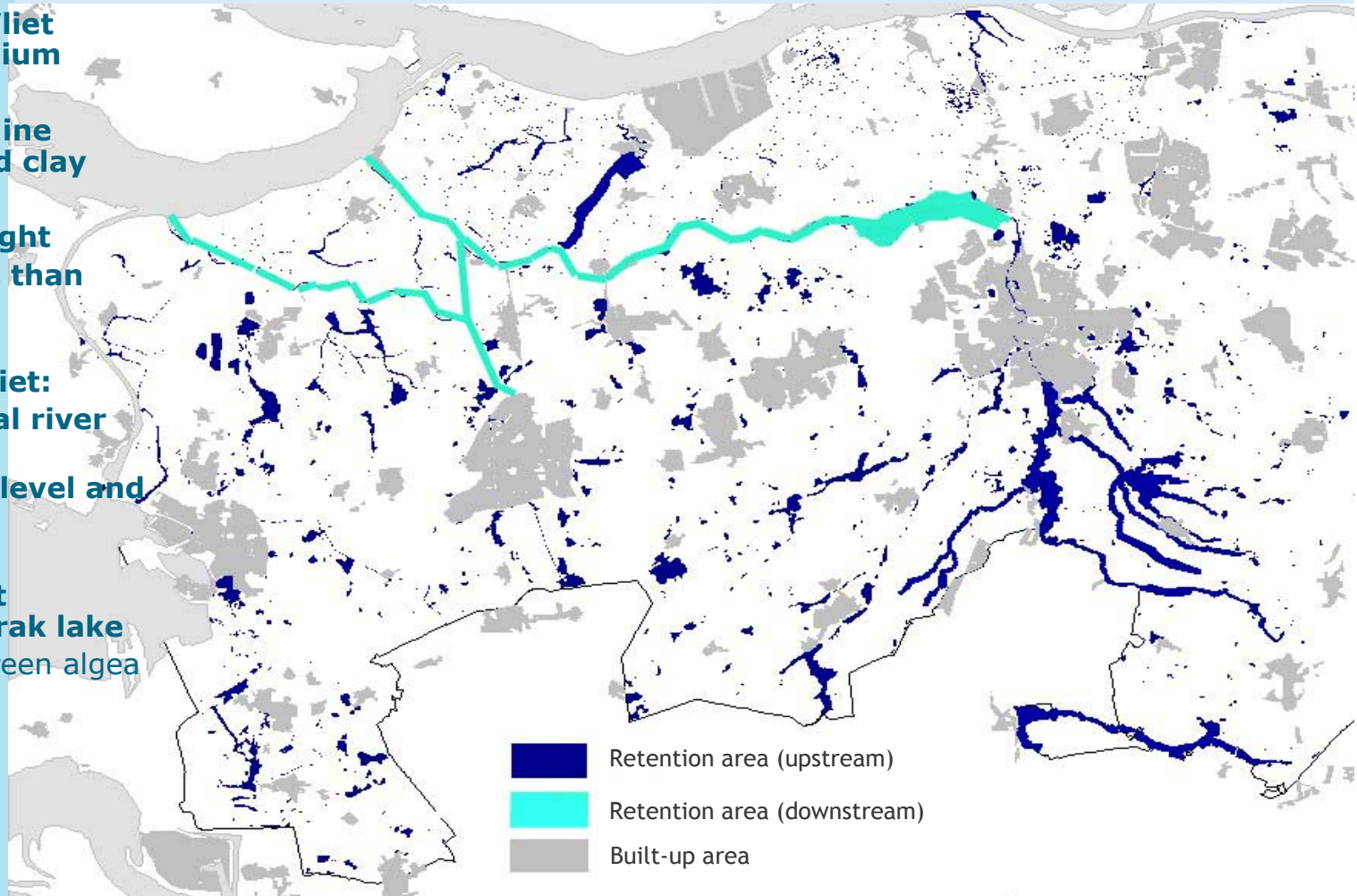
Project Steenbergsche Vliet



30th September 2010
Ron Lambregts

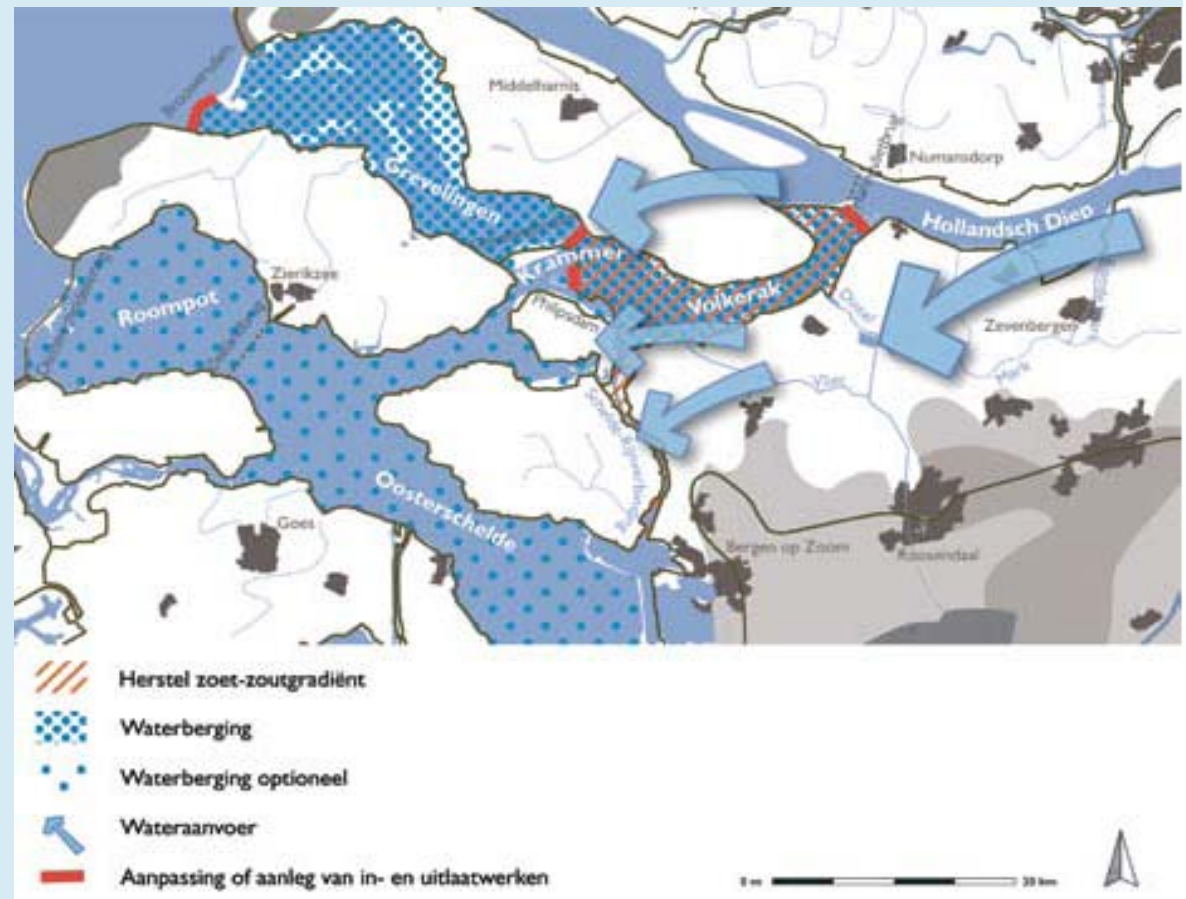
Characteristics of the water system Mark-Vliet

- **rivers Mark and Vliet originates in Belgium**
 - **on the boundary line between sand and clay**
 - **differences in height from 20 m to less than one metre**
 - **Steenbergsche Vliet:**
 - used to be a tidal river since 1850
 - sluices manage level and freshwater since 1987
 - by compartment
- Volkerak lake**
water quality: blue green alga



Advise of the Delta commission

- **Volkerak-Zoommeer** (including Grevelingen and Oosterschelde) will be used for temporary water retention of **Rhine and Meuse water**
- **When?** before 2050



Activities open planning process

- Targets
 - safe and vital water system for the future;
 - create more space for water;
 - connect existing nature areas; increase biodiversity;
 - awareness for water management and impact of climate change
- Solutions
 - create floodplains and retention
 - relocate summer dike, depolder and deepening foreland
 - change agriculture land in wet nature
 - create marches, make wetland and creeks
- Combination of subjects
 - ecological corridors combined with water storage.
 - recreational facilities and awareness
 - commitment and participation (open planning process)

2004-2008 Interreg IIIB

- Three projects were started
 - depoldering 10 ha agriculture land to wetland
 - restoring fortress canal
 - lowering 2,5 ha floodplain
- and sorted commitment for continuation in 2009-2013

Old and new situation historical fortress



Depoldering location Benedensas

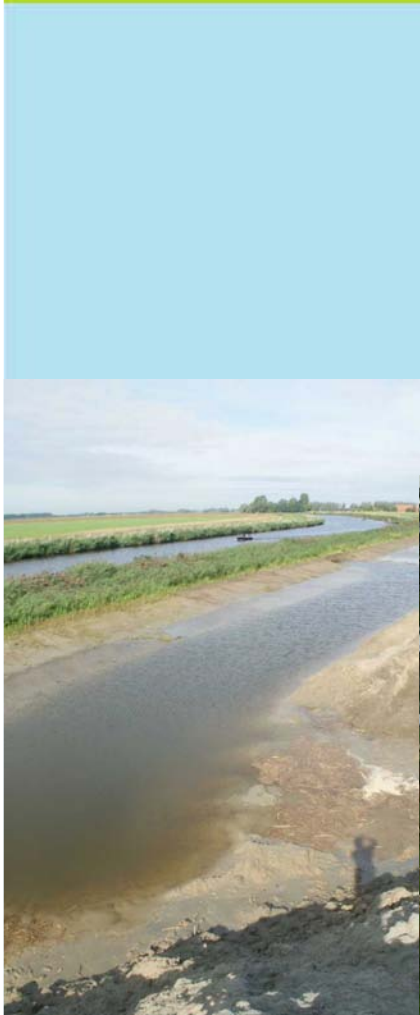


meadow Vlietdijk, lowering floodplain

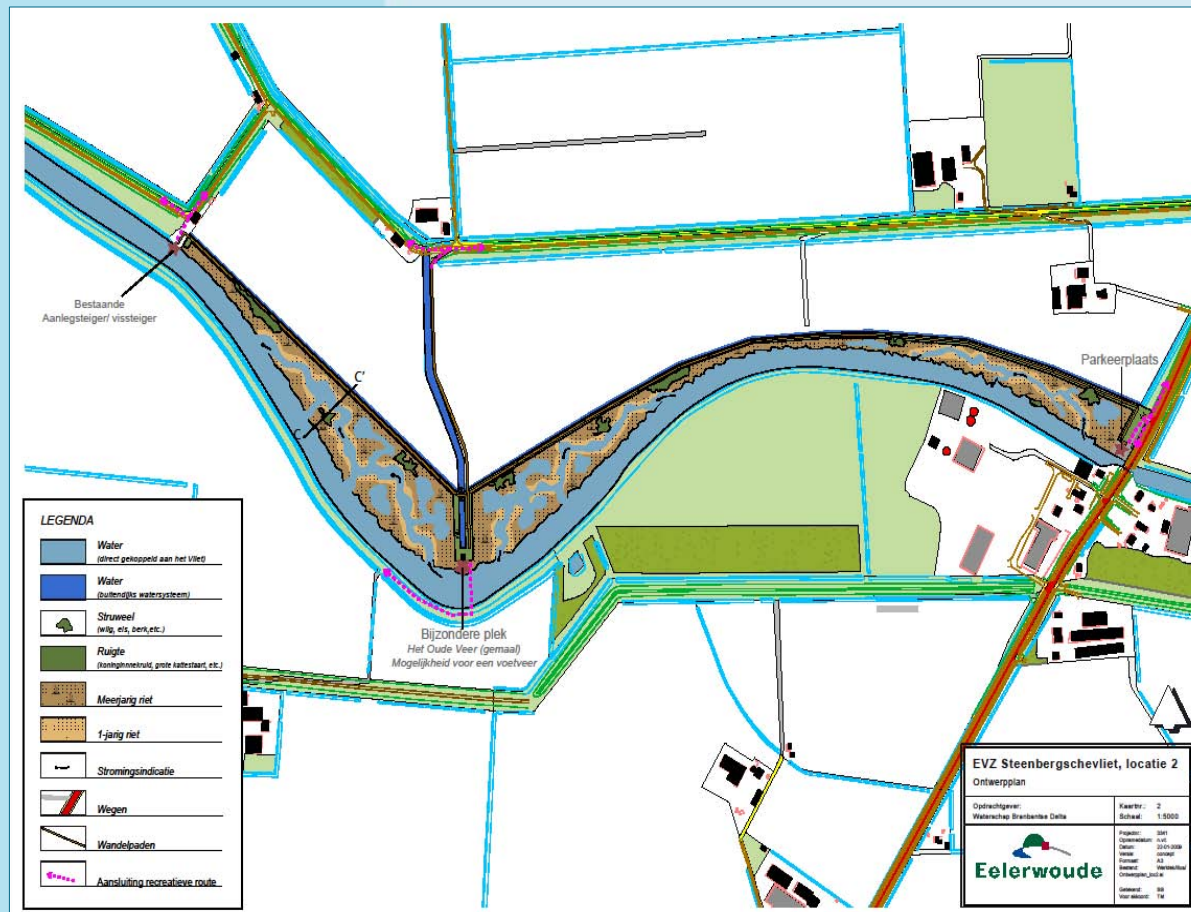


Activities 2009-2013

- Along the Steenbergse Vliet (€ 700.000,-)
- Development of at least 8,5 ha
- Transfer agricultural land into wetlands
- Ecological corridors combined with water storage.
- Recreational facilities for walking and biking
- Communication, awareness and participation

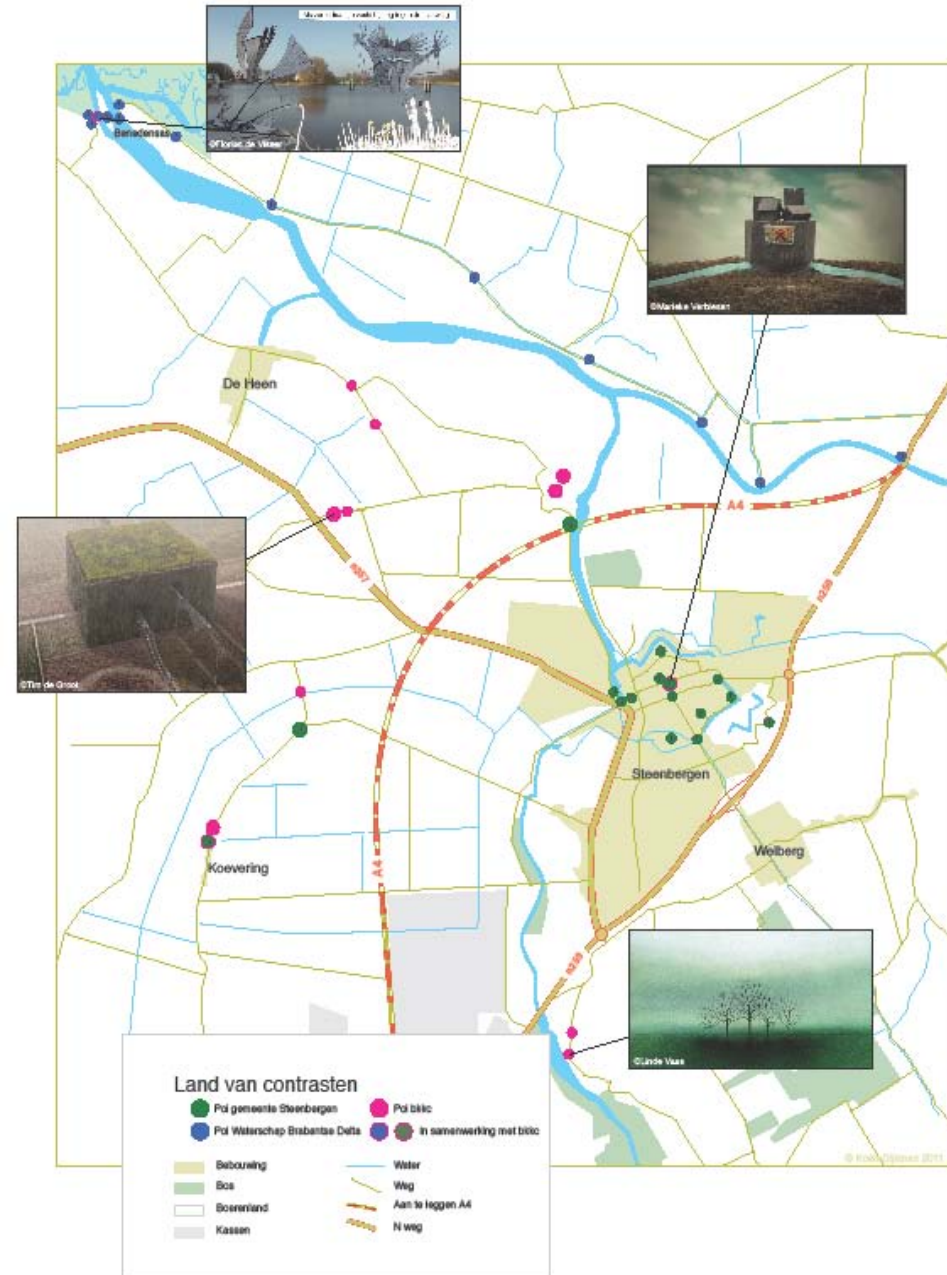


Project works: Dinteloordseweg/Steenbergscheweg



- Agriculture land changed into 8,5 ha wetland
- Hiking trails on the new summer dike
- Information panel with QR-code
- GPS-route

GPS-route



Today's site visit

- 11.00 h.
by bus to project area
- walk (1 km)
and GPS-experience
- lunch in the field
- bicycle (6 km) GPS-route
and enjoy info, landscape and weather
- drink at golf & leisure Akkermans
- 15.30 h.
ending by bus at town-hall

