



Adaptation of the Meuse to the Impacts of Climate Evolutions



Climate Changing ? Meuse Adapting !



This project has received
European Regional
Development Funding
through INTERREG IV B.

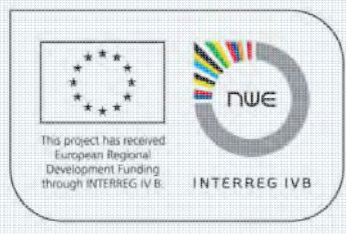


INTERREG IV B



AMICE in brief

- 4 years of cooperation : 2009-2012
- 4 countries : FR, BE, DE, NL
- 17 Partner organisations
- budget 8,9 million €
- EPAMA Lead Partner





The Meuse countries

NETHERLANDS

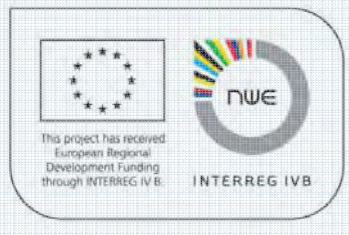
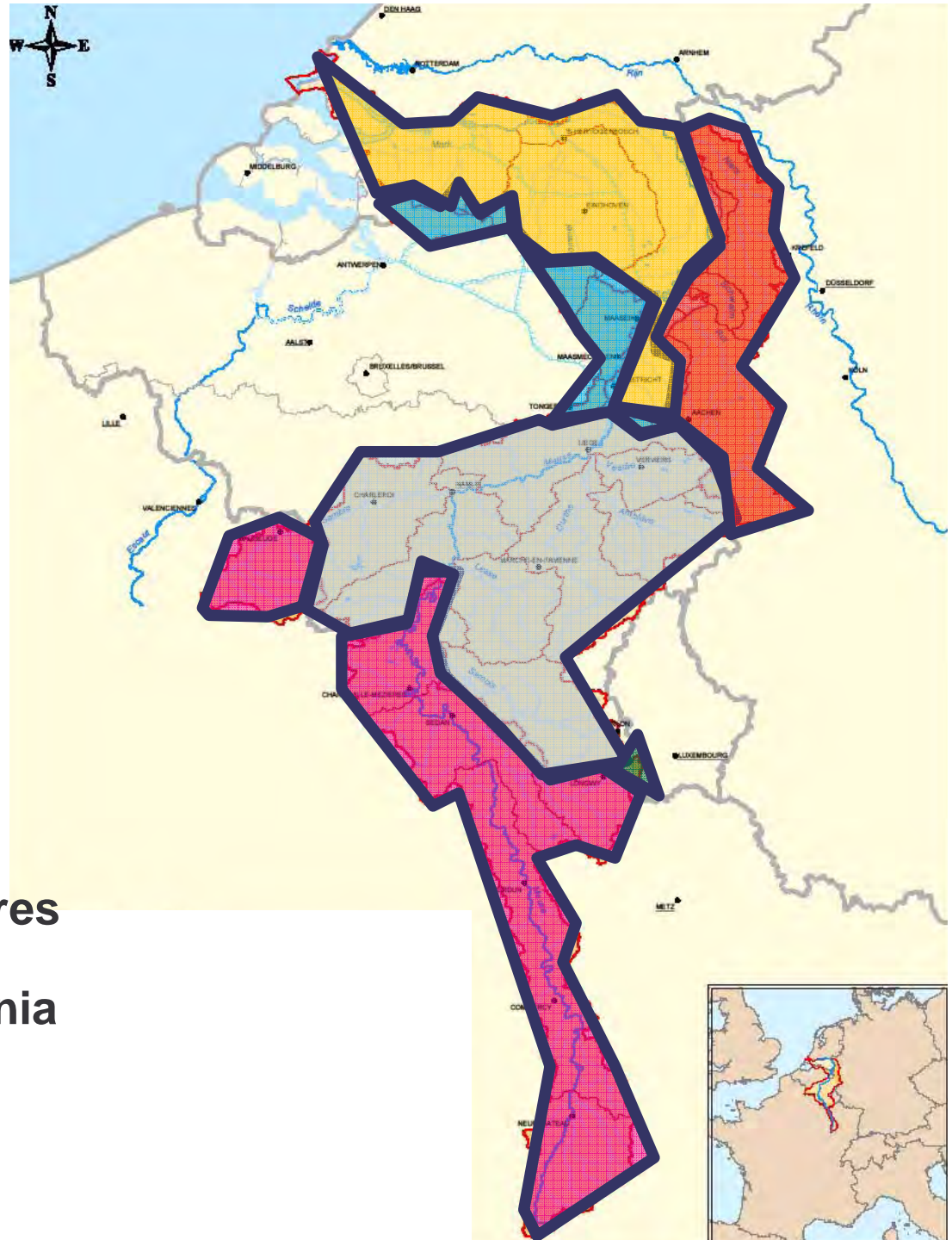
GERMANY

LUXEMBOURG

BELGIUM - Flandres

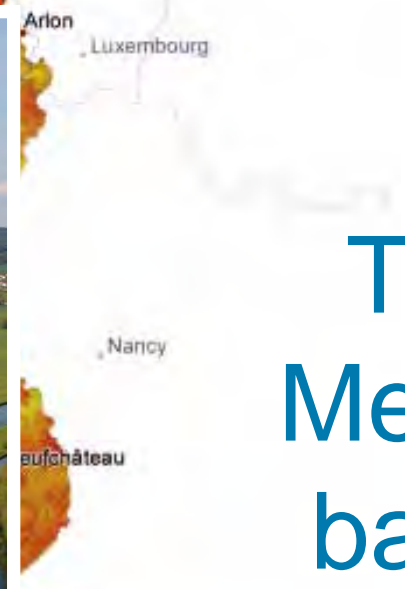
BELGIUM - Wallonia

FRANCE

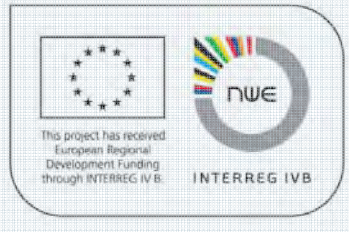




905 km
350 m³/s
9 million inhab.



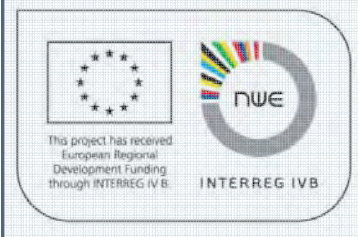
The Meuse basin





Ambitions

- ✓ Define a common strategy of adaptation to the impacts of climate evolutions
- ✓ Realise a set of measures beneficial for the entire Meuse basin
- ✓ Strengthen and widen the partnership between the stakeholders of the international basin
- ✓ Involve the population and decision-makers through knowledge of the Meuse basin and risk-consciousness





Funding

8,9 million € total budget

2,8 million € ERDF

“The North West Europe Programme aims to capitalise on the cooperation between key actors to address territorial issues across the NWE area.

This is in order to contribute to the NWE’s economic competitiveness while equally promoting regionally balanced and sustainable development”



www.nweurope.eu

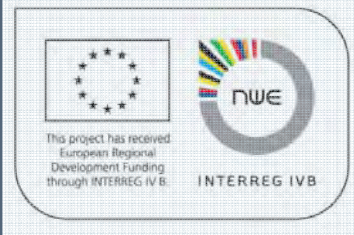
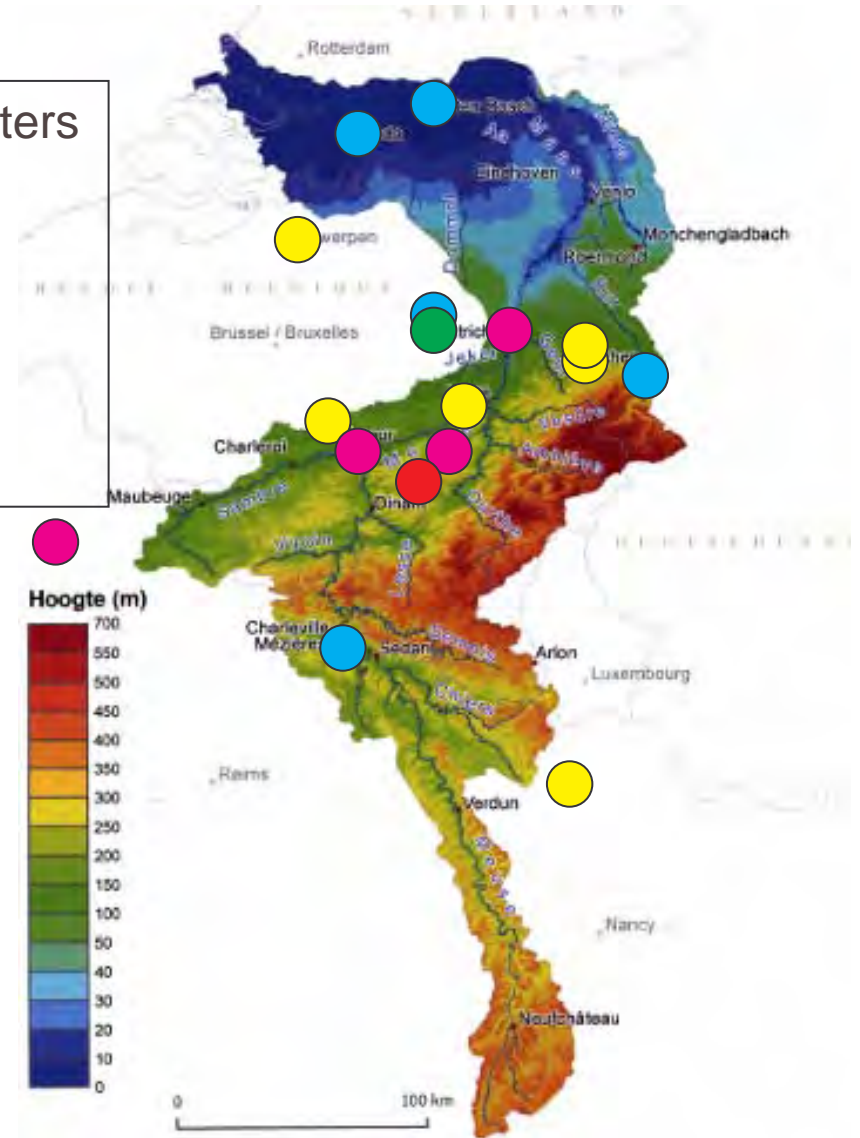




Partnership

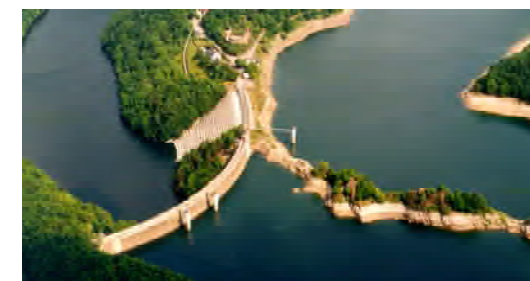
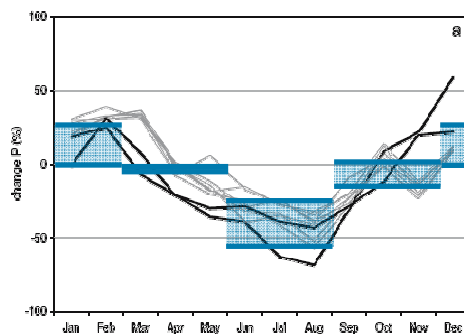
- 6 Universities and research centers
- 5 Water managers
- 4 Public Authorities
- 1 Emergency center
- 1 Association

- 3 Netherlands
- 3 Germany
- 3 Flanders
- 5 Wallonia
- 3 French





AMICE project organisation



2009

2012

